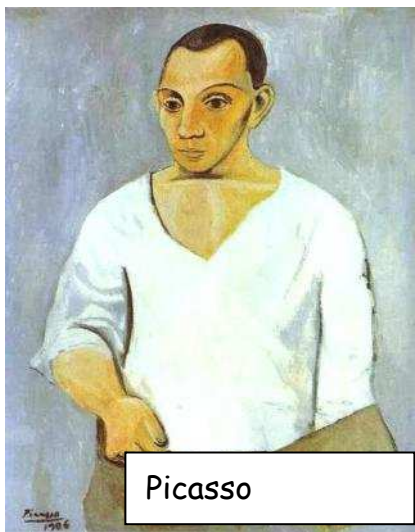


Les peintres ayant
influencé la scénariste et
les dessinateurs du
« Tableau »

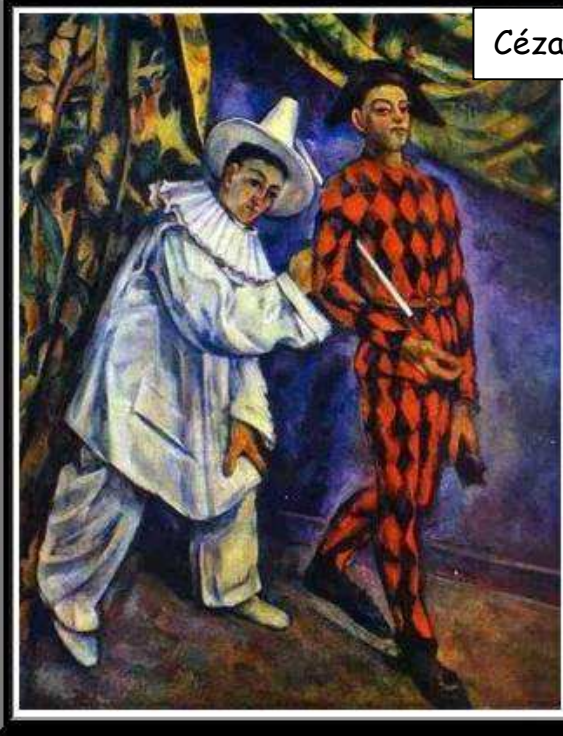
Les personnages



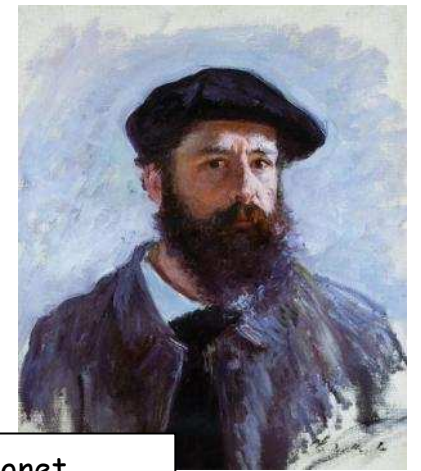
Picasso



Monet



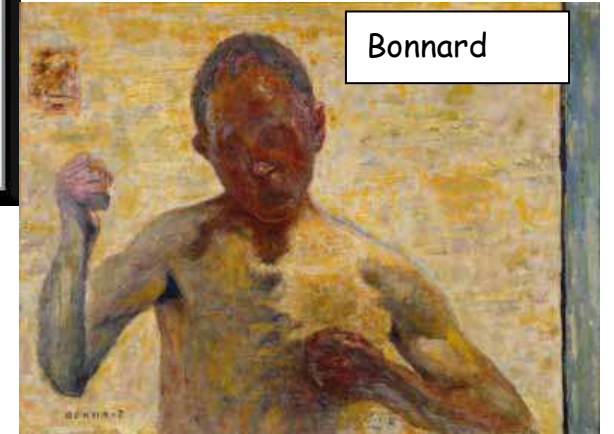
Cézanne



Monet



Modigliani



Bonnard



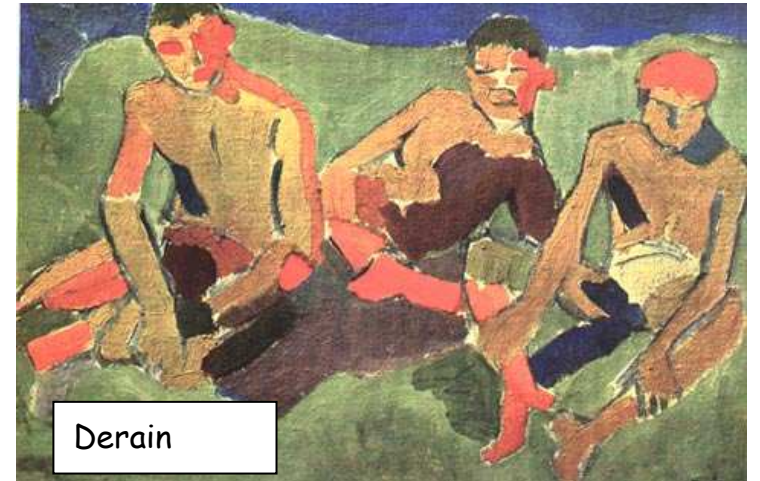
Picasso



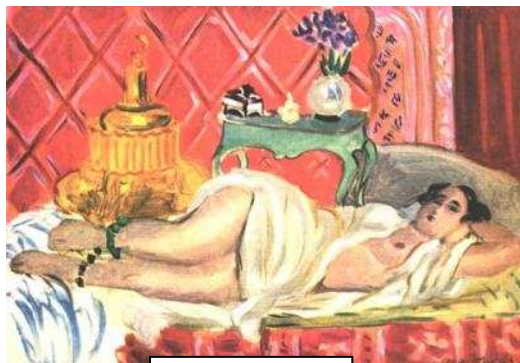
Picasso



Derain



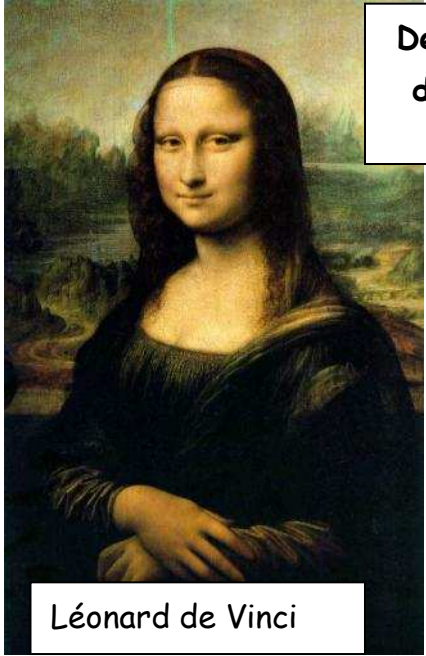
Derain



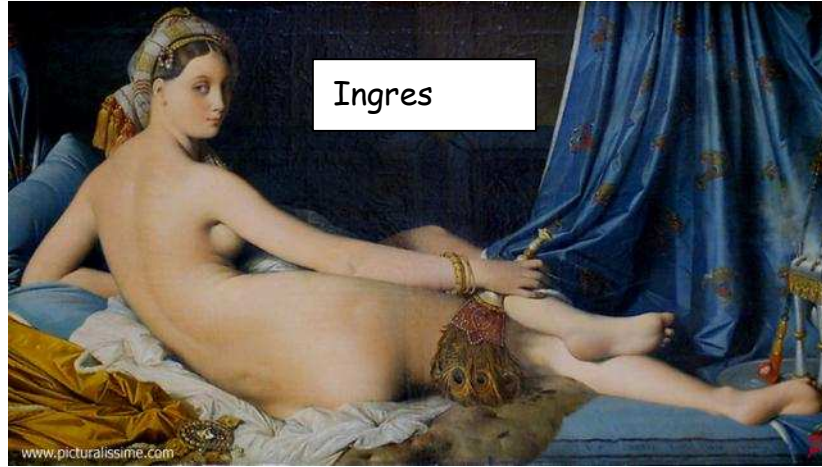
Matisse

De vrais tableaux aperçus
dans l'atelier du peintre

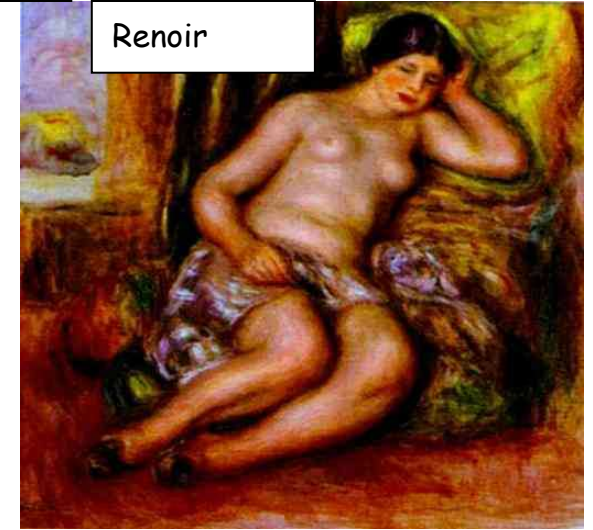
L'Odalisque, reprise et
déclinée depuis Ingres



Léonard de Vinci



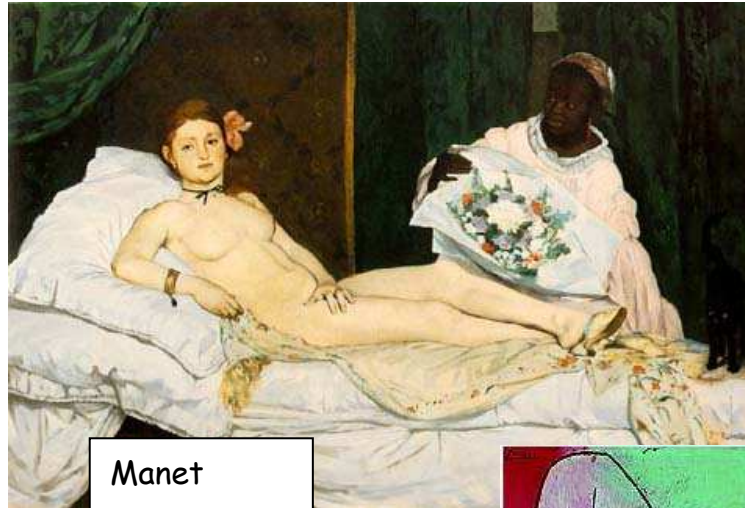
Ingres



Renoir



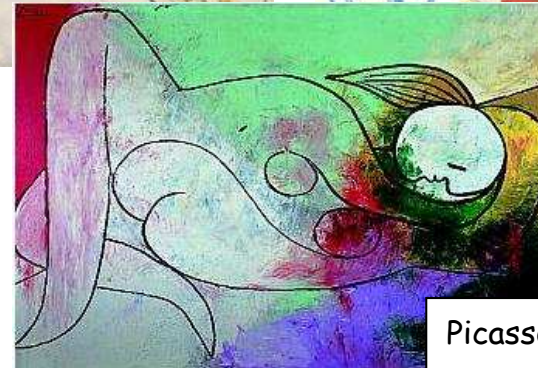
Manet



Manet



Matisse



Picasso

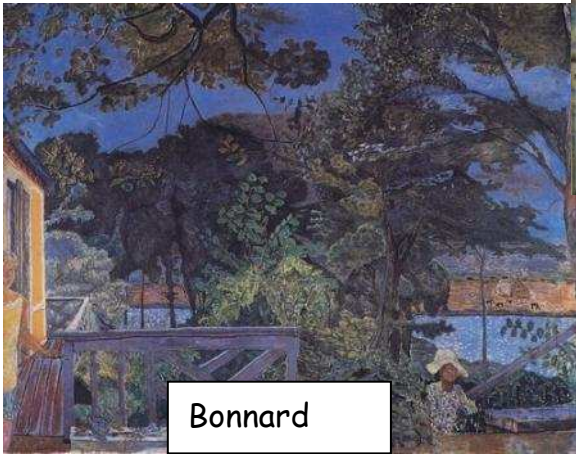
Les peintres ayant influencé la scénariste et les dessinateurs du « Tableau »
Les décors



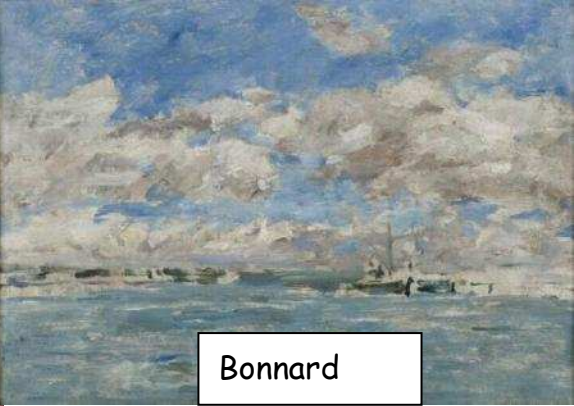
Gaudi



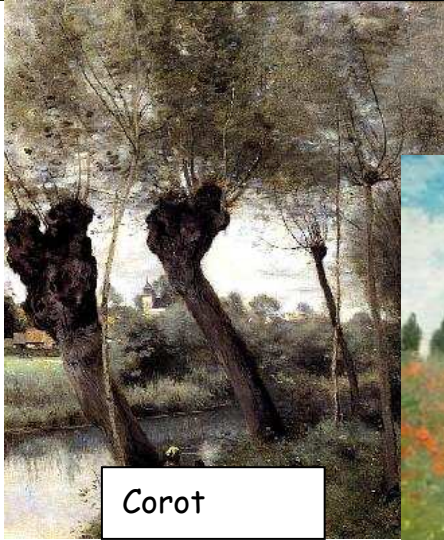
Le douanier Rousseau



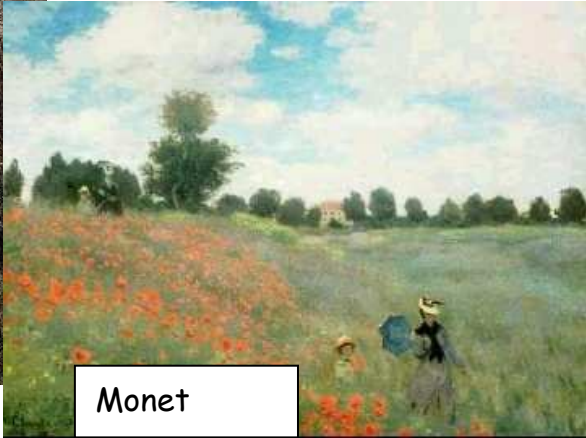
Bonnard



Bonnard



Corot



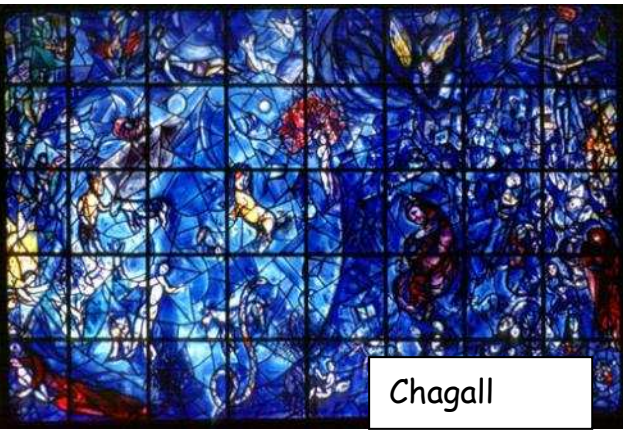
Monet



Monet



Van Gogh



Chagall